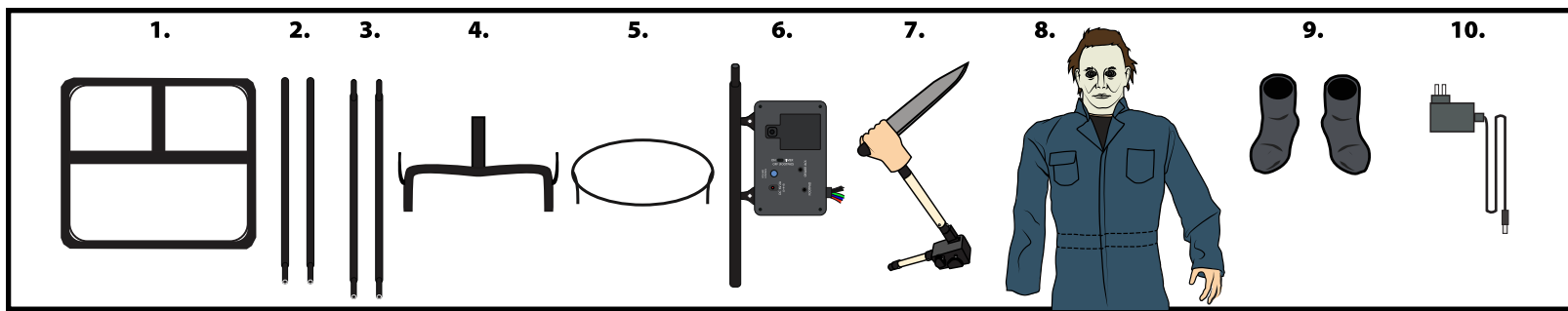


Halloween

STANDING DECORATION

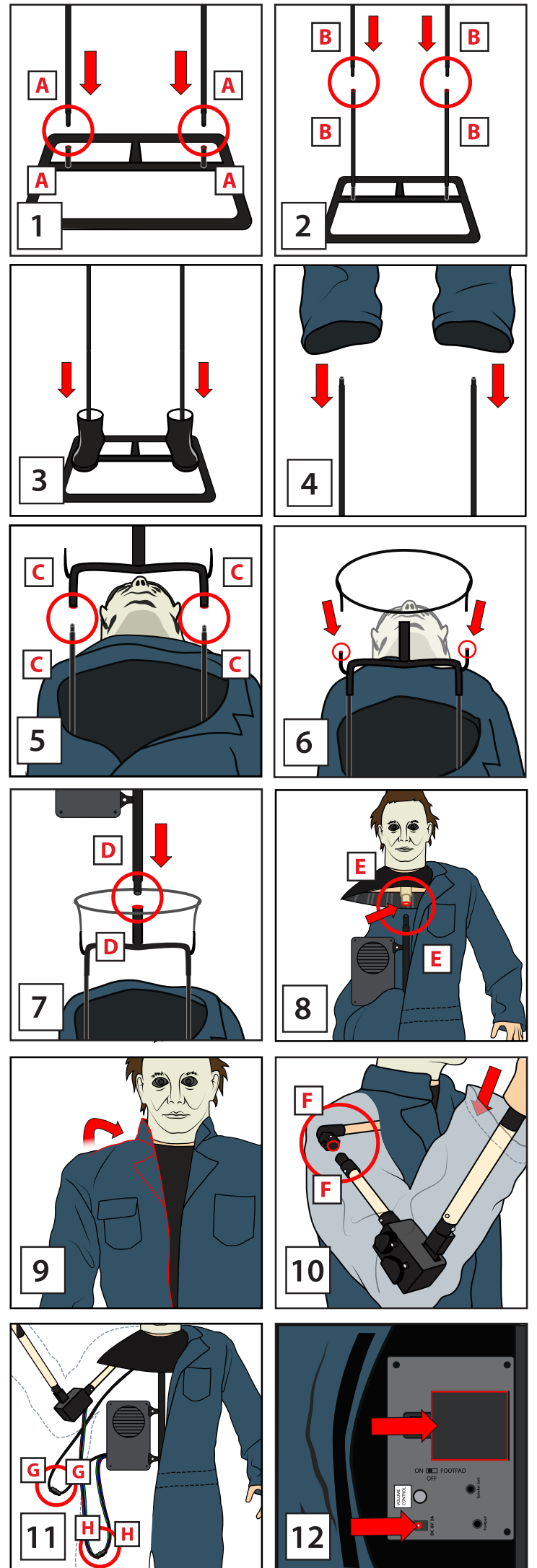
Installation and Operating Instructions Keep all plastic and wire parts away from children.



PARTS

1. METAL BASE
2. LOWER LEG POLES
3. UPPER LEG POLES
4. WAIST FRAME
5. WAIST BRACKET
6. CENTER POLE AND CONTROL BOX
7. KNIFE ARM
8. BODY AND HEAD
9. BOOTS
10. 6V2A ADAPTER

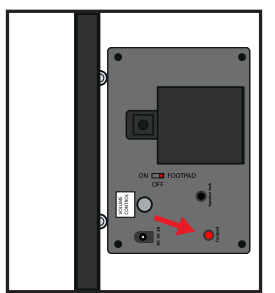
1. Insert LOWER LEG POLES into the METAL BASE. (Match A to A)
2. Insert UPPER LEG POLES into the LOWER LEG POLES. (Match B to B)
3. Slide boots over the LEG POLES and onto the METAL BASE.
4. Slide BODY AND HEAD pants openings over the LEG POLES.
5. Snap lock the WAIST FRAME onto the UPPER LEG POLES through the chest hole. (Match C to C).
6. Insert the WAIST BRACKET posts into the WAIST FRAME.
7. Snap lock the CENTER POLE AND CONTROL BOX to the WAIST FRAME. (Match D to D)
8. Pull the BODY AND HEAD up over the CENTER POLE AND CONTROL BOX. Snap lock the BODY AND HEAD to the CENTER POLE AND CONTROL BOX. (Match E to E)
9. Pull the right sleeve upward over the shoulder and zipper up the clothing on the BODY AND HEAD.
10. Insert the KNIFE ARM through the sleeve. Snap lock the KNIFE ARM to the shoulder. (Match F to F).
11. Open the hook and loop on the right side of the clothing and connect the wires from the CONTROL BOX and the KNIFE ARM. (Connect G to G) and (Connect H to H)
12. Connect the 6V 2A Adapter (included) or insert 4AA alkaline batteries (not included) into the CONTROL BOX. Move in front of the item or make a loud sound (clap) to activate the item. Turn off Michael when not in use.
*Please note even if you shoot him six times he will not die. He is not human!
13. Close the hook and loop located on the right side of the clothing. Position item as seen in illustration. Continue to to Footpad or Speaker set up as needed.



OPTIONAL FOOTPAD SET UP

FOOTPAD IS NOT INCLUDED. MUST BE PURCHASED SEPARATELY.

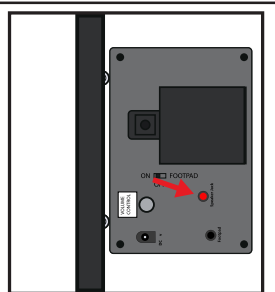
1. Insert the cable from optional footpad into the jack labeled FOOTPAD on the CONTROL BOX.
2. Place the switch in the FOOTPAD position to enable FOOTPAD activation.
3. Step on the FOOTPAD to activate the scary sequence!



OPTIONAL EXTERNAL SPEAKER SET UP

EXTERNAL SPEAKER IS NOT INCLUDED. MUST BE PURCHASED SEPARATELY.

1. Plug speaker cord into the jack labeled SPEAKER JACK located on the CONTROL BOX.
2. Use volume knob on external speaker to control volume levels.



* Footpads and adapters are sold separately and can be purchased at www.tekkyaccessories.com

BATTERY INSTRUCTIONS AND CAUTIONS

Battery installation and removal should be performed by an adult. Remove batteries when not in use. Use only batteries recommended in the instructions. Do not mix new and used batteries. Do not mix alkaline, carbon-zinc, nickel-cadmium, rechargeable or different types of batteries. Be mindful to insert batteries with the correct polarity (+/-) as indicated. Remove all exhausted batteries. Rechargeable batteries are only to be charged under adult supervision. Rechargeable batteries are to be removed from the item before being charged. Non-rechargeable batteries are not to be recharged. The supply terminals are not to be short-circuited. Always dispose of exhausted batteries properly. Do NOT dispose of batteries in fire, they may leak or explode.

Warning! This item is not a toy. For decoration only. Small parts, choking hazard. This product is intended for use by persons 15 years of age and older. Not intended for use by children ages 14 years and younger.

WARNING
DO NOT TURN ITEM ON UNTIL YOU HAVE COMPLETELY FINISHED ASSEMBLY.
STAY CLEAR OF ITEM WHILE OPERATING.
DO NOT PLACE ITEM ON UNEVEN GROUND.
DO NOT PLACE WEIGHT ON ITEM WHILE IN OPERATION.

STOP DO NOT RETURN THIS ITEM TO THE STORE!
If experiencing technical difficulties, please go to www.tekkydesign.com for assistance.



visit us at tekkydesign.com

Requires 4 AA batteries (not included) or 6V2A adapter (included)

ALL NEW MATERIALS:
METAL, PLASTIC, FABRIC
Surface washable only.

HALLOWEEN 2 © Universal City Studios LLC.
All Rights Reserved.
MADE IN CHINA

SMART PHONE SCAN

SETUP VIDEO

